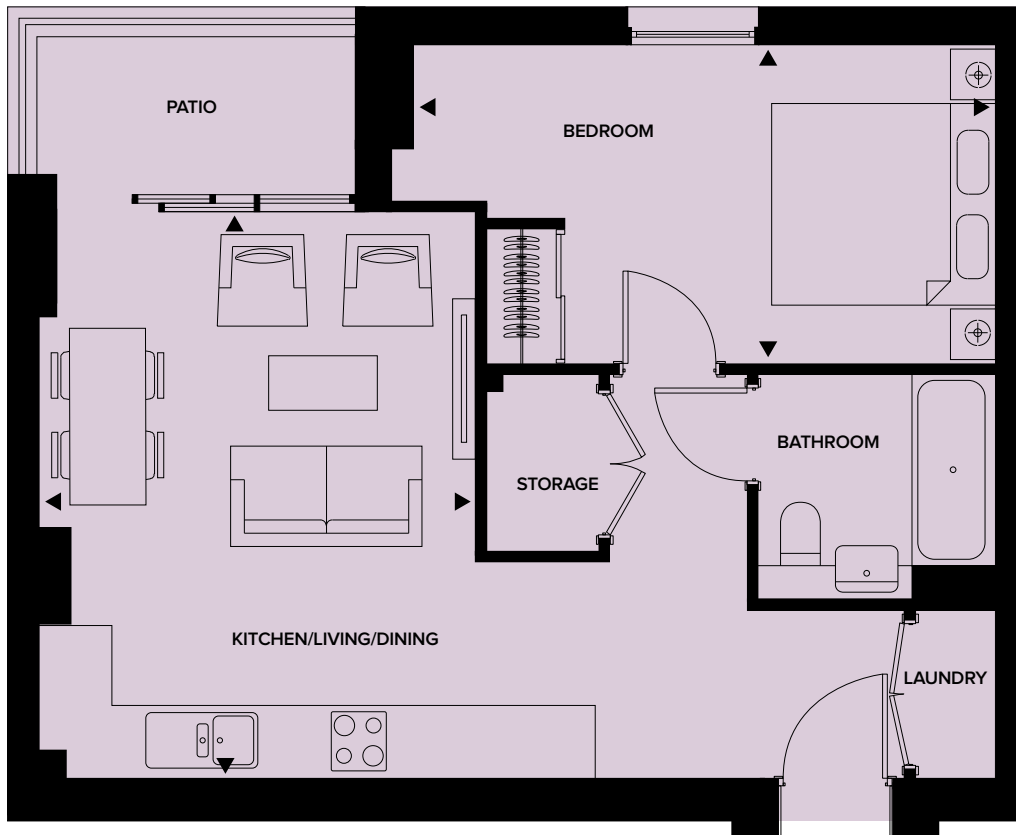


# THE HELIER

CENTRE TOWER | FLOORS 3-8 | 1 BEDROOM

- STUDIO
- 1-BED
- 2-BED
- PENTHOUSE



Kitchen, Living & Dining	5.0 x 3.9m	16'4" x 12'7"
Bedroom 1	5.2 x 2.9m	17'1" x 9'5"
<b>TOTAL AREA</b>	<b>50.31m<sup>2</sup></b>	<b>541 sq ft</b>

All dimensions approximate, with sizes indicating the longest measurement, but should not be used to purchase carpets, curtains, appliances or items of furniture. Elevations, external treatments, windows, bricks and other materials may vary. Please ask our sales executive for full specification and specific details to each home.